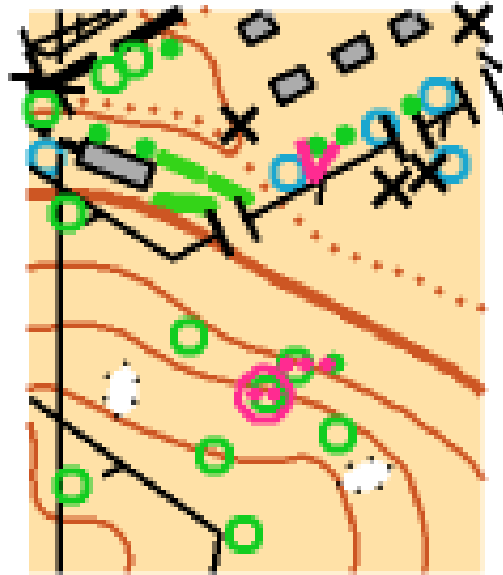


## CONTROL #1

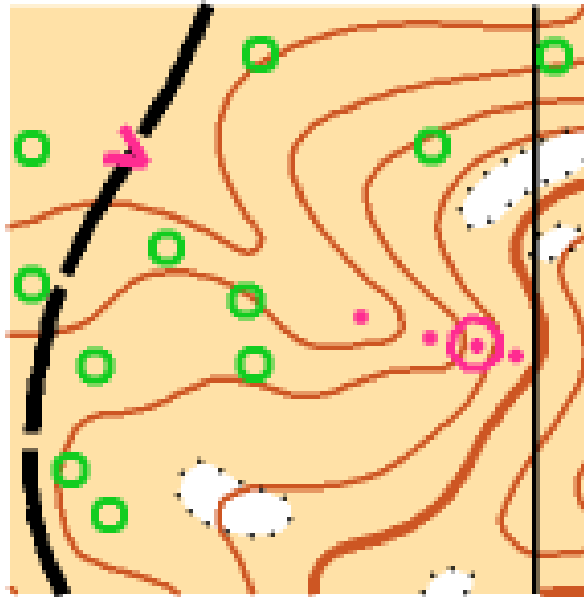


ANSWER: D

Identify the tree that is circled and then determine the East side. This can be a little confusing in two ways. Looking at the hillside, it looks like there are three trees in a line. The one on the left is smaller, and the mapper chose to identify it with a solid green circle (which can be anything from a shrub to a small tree). So the tree circled is the third one in the line. Then you need to determine the East side. Remember you are facing almost due South, so the East side is on your left.



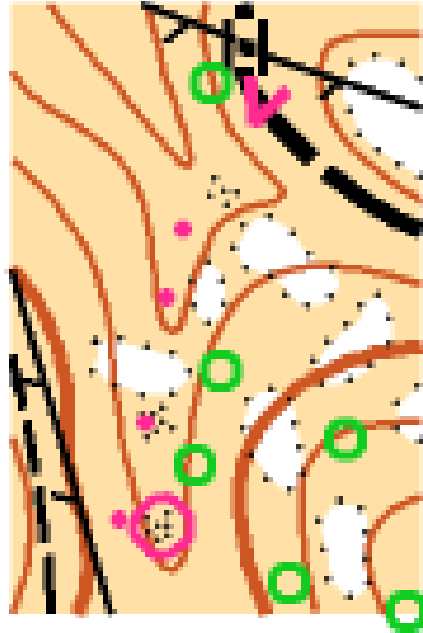
### CONTROL #3



ANSWER: B

Determine how far up the reentrant the control circle is. The trees on both sides of the reentrant can give you a sense of how far up you are if you can follow a contour with your eye. It isn't easy. Move a little south on the trail to line the base of a tree up with the bags and see what you think. Or look at the forested area high up on the North side of the reentrant. Actually, the easiest place to solve the puzzle is up here where the answer is. The control circle is just a little higher than the base of the tree you are now standing near. You can't see the lower two bags right now, so they are too low. Bag A is too high.

## CONTROL #4



ANSWER: Z

Determine which flag is in the stony ground. Actually none of them are. You can't actually see the bottom of the reentrant in the area of the circle – it is around the bend, just out of sight. Bag B is in stony ground but it is in the stony ground just past the forested area. The closest is Bag A, but you can see that it is not in the bottom of the reentrant, so it cannot be the answer.